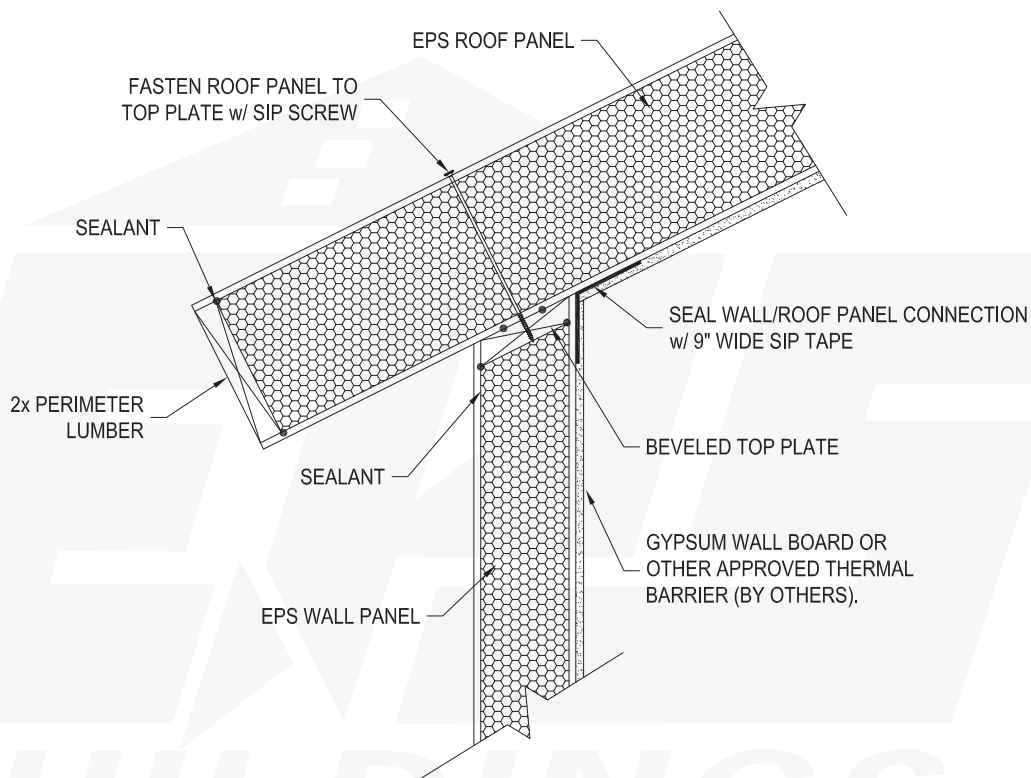


NOTE: SEE FASTEN SCHEDULE FOR ALL CONNECTIONS



**DETAIL:** BEVELED TOP PLATE/SQ CUT EAVE

**SCALE:** N.T.S.

**UPDATED:** 1/26/16

**DETAIL#**

**RP3**

ENERGY PANEL STRUCTURES, 102 EAST INDUSTRIAL PARK, GRAETTINGER, IA 51342  
PHONE: (712) 859-3219 FAX: (712) 859-3275 WWW.EPSBUILDINGS.COM